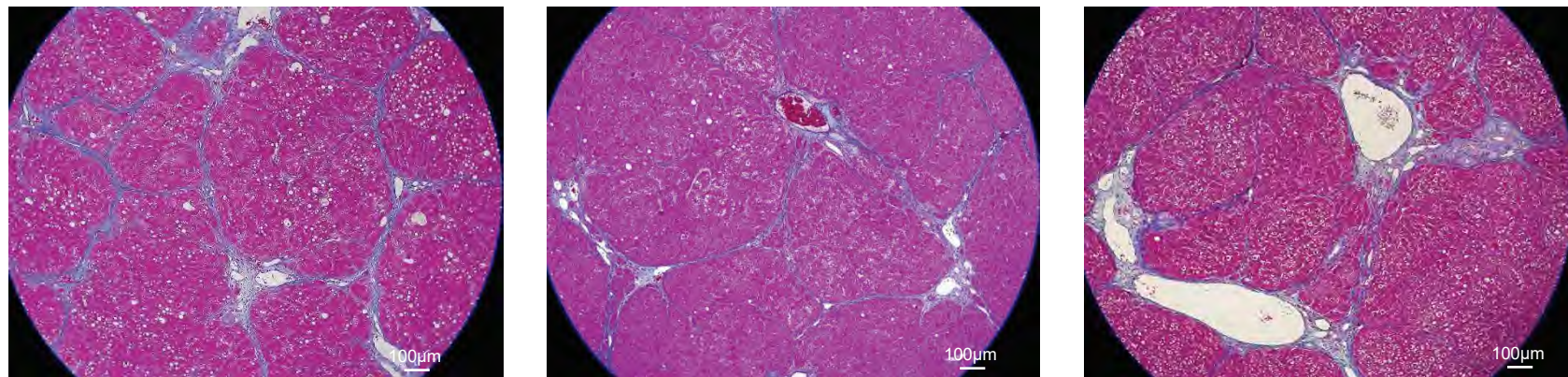


**Fig.1**



POD 0

POD 7

POD 14

Group

A : 70%PVL  
(n=22)

▼  
ligation of left lobe  
(lateral & median)

▼ (▼ 50% CCl<sub>4</sub> 0.2 ml s.c.)  
(△ pathological and blood examination)

B : 90%PVL  
(n=22)

▼  
ligation of left lobe (lateral & median)  
and right lobe

C : two-stage 90%PVL  
(70%PVL ⇒ 20%PVL)  
(n=10)

▼  
ligation of left lobe  
(lateral & median)

▼  
ligation of right lobe

0 2 7 14  
△ △ △ △

Days after operation